



# Monte Vista Elementary

# MONTE MEMO

Learners Today, are Leaders Tomorrow

Pamela Picchiotino, Principal  
Michael Benecchi, Assistant Principal



## JANUARY 2025

## Happy New Year

Welcome back, everyone! We hope you all had a wonderful winter break and are ready for an exciting new year of learning and fun. As we start this new chapter, let's remember our school-wide expectations:

Be Safe, Be Respectful, Be Responsible, and Be Kind.

- Be Safe: By walking on and around campus.
- Be Respectful: By listening and following expectations.
- Be Responsible: By being an Attendance HERO ... Here, Every day, Ready, & On Time.
- Be Kind: By demonstrating kind and helpful words and actions.

Let's make this year the best one yet by following these important guidelines.

Welcome back, and let's have a fantastic time together!

### IMPORTANT DATES

**JANUARY 14TH**

STUDENTS BACK

**JANUARY 15TH**

REGULAR SCHEDULE

**JANUARY 20TH**

**NO SCHOOL**

MARTIN LUTHER KING JR. DAY


**JANUARY 22ND**

EARLY OUT

**JANUARY 29TH**

EARLY OUT

### School-Wide Expectations

Be Safe	Be Respectful	Be Responsible
  by Keeping All Hands, Feet and Other Objects To Yourself (KAHFOOTY).	 by listening and following expectations.	 by being an Attendance Hero. Here Everyday Ready On Time
 by walking on and around campus.	 by using kind words, faces, and body language.	 by using coping skills to help with strong emotions.
 Wash Your Hands by washing/sanitizing my hands often and keeping my hands away from my mouth, nose, and eyes.	 by being mindful of others' ideas and feelings.	 by having a growth mindset and thoughtfully problem solving.

**Ways to Feel Calm:**  
Take a Break  
Slow Breathing  
Ask for Help  
Think Helpful Thoughts

### IMPORTANT LINKS

[School Website](#)

[Menus](#)

[Counselor's Corner](#)

# JANUARY 2025



MON	TUE	WED	THU	FRI
*ALL DATES AND TIMES ARE SUBJECT TO CHANGE*		1	2	3
6	7	8	9	10
13 <b>NO SCHOOL</b>	14 Meet and Eat 7:15a PTA GA Meeting 3pm	15 Meet and Eat 7:15a <b>REGULAR DAY</b>	16 Meet and Eat 7:15a TK-2ND STEAM 2:45-3:30PM	17 Meet and Eat 7:15a Bookland 2:45p-3:30p
20 <b>NO SCHOOL</b> 	21 Meet and Eat 7:15a Tk-2 Volleyball 2:45-5:00pm STEAM 3RD-5TH 2:45p-3:45p	22 Meet and Eat 7:15a <b>EARLY OUT</b>	23 Meet and Eat 7:15a 3rd-5th Volleyball 2:45-5:00pm TK-2ND STEAM 2:45-3:30PM	24 Meet and Eat 7:15a ELAC MEETING 9:15 AM Bookland 2:45p-3:30p
27 Meet and Eat 7:15a Minecraft 7:45a-8:30a Minecraft 2:45p-3:30p United Champions 2:45-3:45p 3-5TH STEAM 2:45-3:30	28 Meet and Eat 7:15a Tk-2 Volleyball 2:45pm-5:00pm	29 Meet and Eat 7:15a <b>EARLY OUT</b>	30 Meet and Eat 7:15a 3rd-5th Volleyball 2:45-5:00pm TK-2ND STEAM 2:45-3:30PM	31 Meet and Eat 7:15a Bookland 2:45p-3:30p





# Attendance Heros

HERE • EVERYDAY • READY • ON TIME



We appreciate families, students, and all staff efforts to ensure our students are Attendance HEROs!

First bell rings at 8:27am for students to walk to class.

School starts promptly at 8:30am.

Students arriving after 8:30am at front gate must get **tardy slip** from front office.

Front and Back Gates are open for a short period of time after 8:30am as a courtesy to our families leaving campus.

Students arriving after 8:30am at back gate will be marked tardy.



## Important Attendance Reminders:

Meet & Eat Program is available to ALL student daily at 7:15am.

Students' absences must be excused daily at (951) 894-5085 ext. 2994 or

AHamm@murrieta.k12.ca.us.

Please inform us as soon as possible regarding extended absences.

We celebrate and recognize your efforts because research has shown positive school attendance leads to success in elementary and secondary school, career and beyond!

We want this success for all our students!



# JANUARY

ELEMENTARY BREAKFAST MENU  
1- FREE BREAKFAST PER STUDENT PER DAY.

## Breakfast Includes

Assorted Fresh Fruit  
Trix Yoplait Yogurt  
100% Fruit Juice

1% White Milk or Non-Fat Chocolate Milk

Monday	Tuesday	Wednesday	Thursday	Friday
<b>Offered Daily</b> *Cereal *Breakfast Bar		1 <b>Winter Break No School</b>	2 <b>Holiday</b>	3 <b>Holiday</b>
6 <b>Holiday</b>	7 <b>Holiday</b>	8 <b>Holiday</b>	9 <b>Holiday</b>	10 <b>Holiday</b>
13 <b>Non-Student Day</b>	14 <b>Cinnamon Snack'n Waffle</b>	15 <b>National Bagel Day!</b> <b>Bagel w/cream cheese</b>	16 <b>French Toast Sticks</b>	17 <b>Pancake Sausage Sandwich</b>
20 <b>Holiday</b>	21 <b>Cinnamon Roll</b>	22 <b>Breakfast Sausage Pizza</b>	23 <b>Mini Maple Pancakes</b>	24 <b>Biscuit &amp; Sausage Patty</b>
27 <b>Chocolate Muffin</b>	28 <b>Cinnamon Snack'n Waffle</b>	29 <b>French Toast Sticks</b>	30 <b>Bagel w/cream cheese</b>	31 <b>Pancake Sausage Sandwich</b>

This Institution is an equal opportunity provider.

Menu subject to change without notice.

# JANUARY

ELEMENTARY LUNCH MENU  
1- FREE LUNCH PER STUDENT PER DAY.

## Salad Bar Entrée

Includes choice of Protein & Grain

\*Hard Boiled Eggs w/crackers

\*Hummus Cup w/pita chips

\*String Cheese w/crackers

Monday	Tuesday	Wednesday	Thursday	Friday
<b>Offered Daily</b> *PB&J Uncrustable *Turkey & Cheese Sub Sandwich *Turkey Sub Sandwich	<b>Lunch Includes</b> Unlimited Daily Salad Bar, String Cheese Goldfish Crackers, 100% Fruit Juice & 1% White Milk or Non-Fat Chocolate Milk	1 <b>Winter Break No School</b>	2 <b>Holiday</b>	3 <b>Holiday</b>
6 <b>Holiday</b>	7 <b>Holiday</b>	8 <b>Holiday</b>	9 <b>Holiday</b>	10 <b>Holiday</b>
13 <b>Non-Student Day</b>	14 <b>Cheeseburger Sliders &amp; Potato Smiles</b>	15 <b>Chicken Nuggets</b> <small>*now with no added soy*</small> <b>*Rosati Icee</b>	16 <b>Rotini w/meat sauce &amp; Texas Toast</b>	17 <b>Chicken Burger</b>
20 <b>Holiday</b>	21 <b>Cheesy Chicken Burrito</b>	22 <b>French Toast Sticks</b> w/chicken sausage patty	23 <b>Orange Chicken w/ Brown Rice</b>	24 <b>Galaxy Cheese Pizza</b> <b>*Cookie Day</b> 🍪
27 <b>Mozzarella Cheese Sticks</b>	28 <b>Corn Dog</b>	29 <b>Chicken Nuggets</b>	30 <b>Meatballs w/marinara &amp; Texas Toast</b>	31 <b>Hamburger</b>

This Institution is an equal opportunity provider.

Menu subject to change without notice.



JANUARY 2025

# Counseling Corner

Monte Vista Elementary School

Mrs. Green, School Counselor

tlgreen@murrieta.k12.ca.us



Happy  
New Year

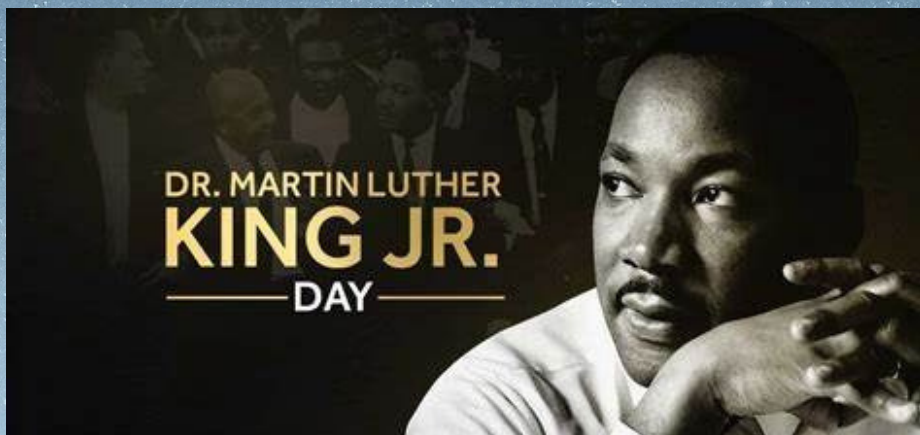
---

## SUPPORT & LINKS

---

Mental Health Concierge  
[Click Here](#)

Community Resources  
[Click Here](#)



This year we observe Martin Luther King Jr. Day of Service on January 20th.

Dr. King is known for his leadership during the American Civil Rights Movement. His "I Have a Dream" speech highlights a world he envisioned with equal justice for all people under the law.

On this day, we recognize Dr. King's legacy of services while inspiring us to serve in our own way.

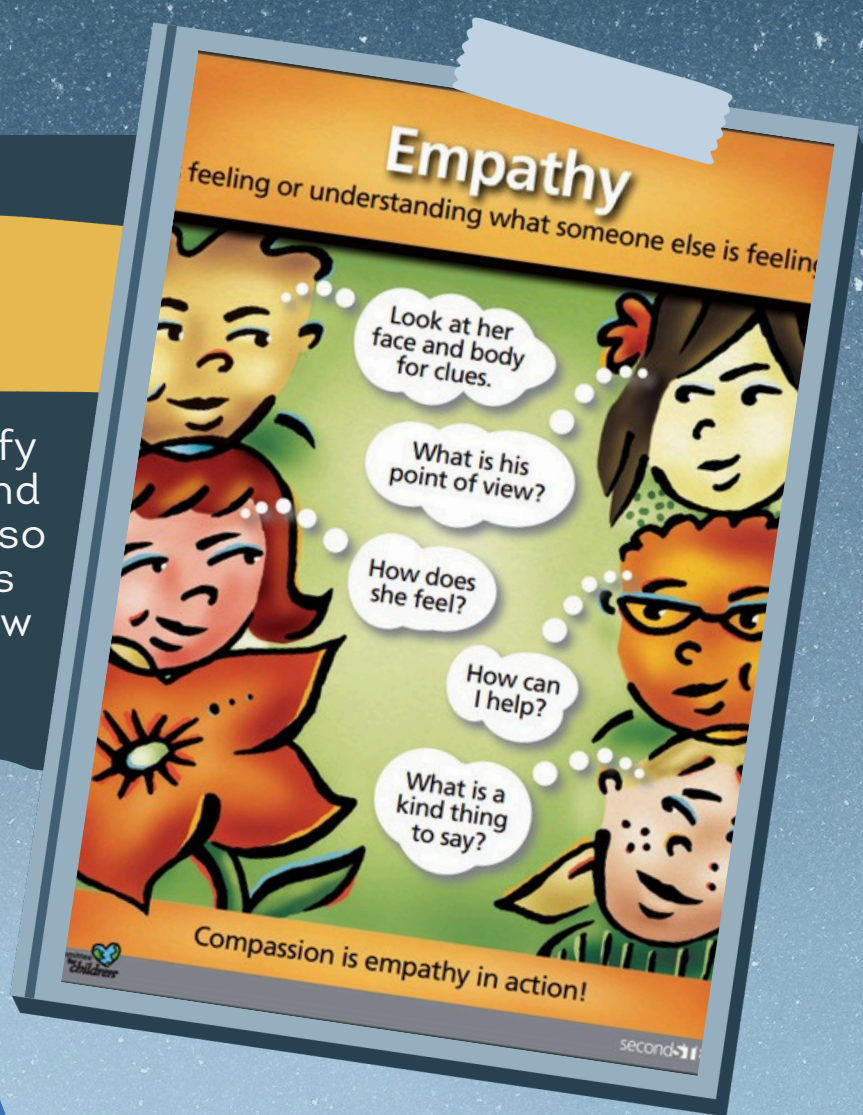
According to the Corporation for National and Community Service (CNCS), MLK Day is the only federal holiday designated as a National Day of Service. Americans are encouraged to spend this day volunteering to improve their communities.





## SECOND STEP LESSONS

Students will learn to identify and understand their own and others' feelings. Students also learn how to take another's perspective and how to show compassion.

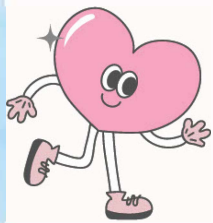


## THE GREAT KINDNESS CHALLENGE

At the heart of the Great Kindness Challenge is a simple belief that kindness is strength. During the Great Kindness Challenge, students have the opportunity to repeat kind act after kind act. As kindness becomes a habit, peace becomes possible. The Great Kindness Challenge is a grassroots movement that is making our schools, communities, and world a kinder and more compassionate place for all. Working together, we joyfully prove that **KINDNESS MATTERS!**





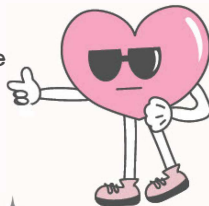
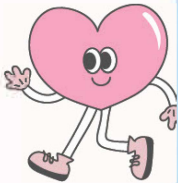


## Valentines for Veterans

The Valentines for Veterans program honors veteran and active duty service members with Valentine's Day cards that express gratitude from the school children in our community.

1/14-1/17

Click [HERE](#) to help our students create Valentine's!



14  
JAN

## PTA General Association **SPECIAL MEETING**



JANUARY 14 @ 3PM  
MONTE VISTA CONFERENCE RM

DID SOMEONE SAY  
COFFEE?!

# THE RUSH

Coffee Truck will be at Monte Vista!

**EVERY TUESDAY STARTING**

**1/14/25**

**7:45AM - 9:00AM**



10% of proceeds go back to Monte Vista PTA

# ATTENTION!

## BOARD MEMBERS *are needed!*



GET INVOLVED AND

## JOIN THE PTA!



### *We need you!*



Scan the QR Code to learn more or click [here!](#)

MONTE VISTA ELEMENTARY SCHOOL

# MONTE'S MINDBENDER



JANUARY 2025

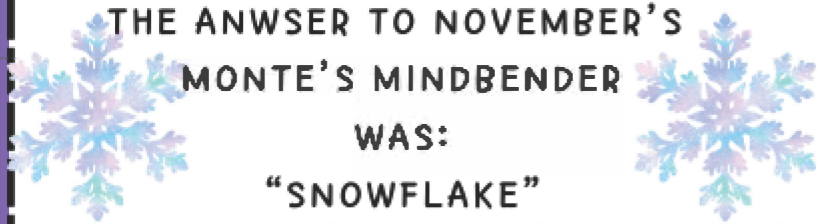
HAPPY NEW YEAR!

RIDDLE ME THIS:

I AM VERY HEAVY, BUT BACKWARDS I  
AM NOT.

THE FIRST FIVE STUDENTS TO TELL  
MS. ANDI THE CORRECT ANSWER TO  
THE RIDDLE ABOVE WIN A PRIZE!

THE ANSWER TO NOVEMBER'S  
MONTE'S MINDBENDER  
WAS:  
"SNOWFLAKE"



## NATIONAL DAYS:

JAN. 6TH

National Cuddle Up Day

JAN 13TH

National Sticker Day

JAN 15TH

National Bagel Day

JAN. 19TH

National Popcorn Day

JAN 22ND

Library "Shelfie" Day

JAN. 24TH

National Compliment Day

JAN. 31ST

National Hot Chocolate Day

## DID YOU KNOW?

THE FIRST TOURNAMENT OF  
ROSES PARADE TOOK PLACE IN  
PASADENA CALIFORNIA ON  
JANUARY 1 1890!

